

**WINNER**

House in a Heritage Context

**House in  
HOUSE**  
by Steffen Welsch  
Architects

• MELBOURNE, VIC •

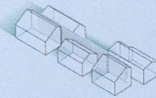
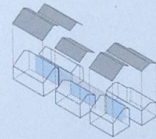
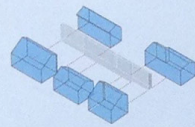
In this thoughtful project in inner-city Melbourne, the architect has combined a conscious design philosophy of "architecture as background" with the pragmatic requirements of accommodating an energetic and busy professional lifestyle. Even though the site for the project exists within an area protected by a heritage overlay, the original building was regarded as "non-contributory," meaning the architect had no formal heritage-related obligations that would influence design decisions. Confident but subtle architectural propositions have been made both in the functional organization of the dwelling and in its publicly visible form.

A sequence of activity spaces is interspersed with open areas to create a light and spatially expansive building. These spaces are well planned, enabling a sense of community while also providing privacy.

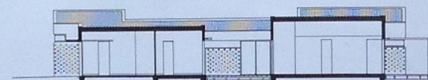
Clever material choice, deft form making and gentle disguise combine to create a fine addition to the heritage place. This project replaces a "non-contributory" building with one of note, providing a fine example of how considered judgements and design strength can offer new ways of dealing with our living environments. From the Houses Awards jury.

Award for House in a Heritage Context is supported by

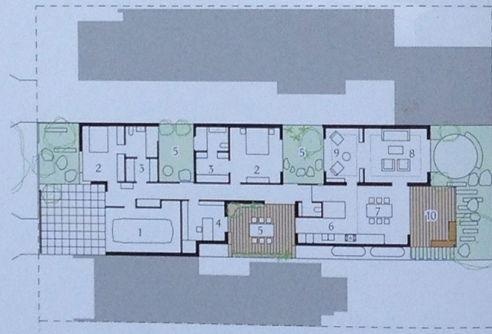
**HERITAGE  
COUNCILS  
VIC & NSW**



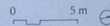
Pavilion massing/central spine diagram



Section 1:400



Plan 1:400



- |             |           |
|-------------|-----------|
| 1 Garage    | 6 Kitchen |
| 2 Bedroom   | 7 Dining  |
| 3 Robe      | 8 Living  |
| 4 Study     | 9 Sitting |
| 5 Courtyard | 10 Deck   |





**Architect**  
**Steffen Welsch Architects**  
7/252 St Georges Road  
Fitzroy North Vic 3068  
+61 3 9988 9411  
sw@steffenwelsch.com.au  
steffenwelsch.com.au

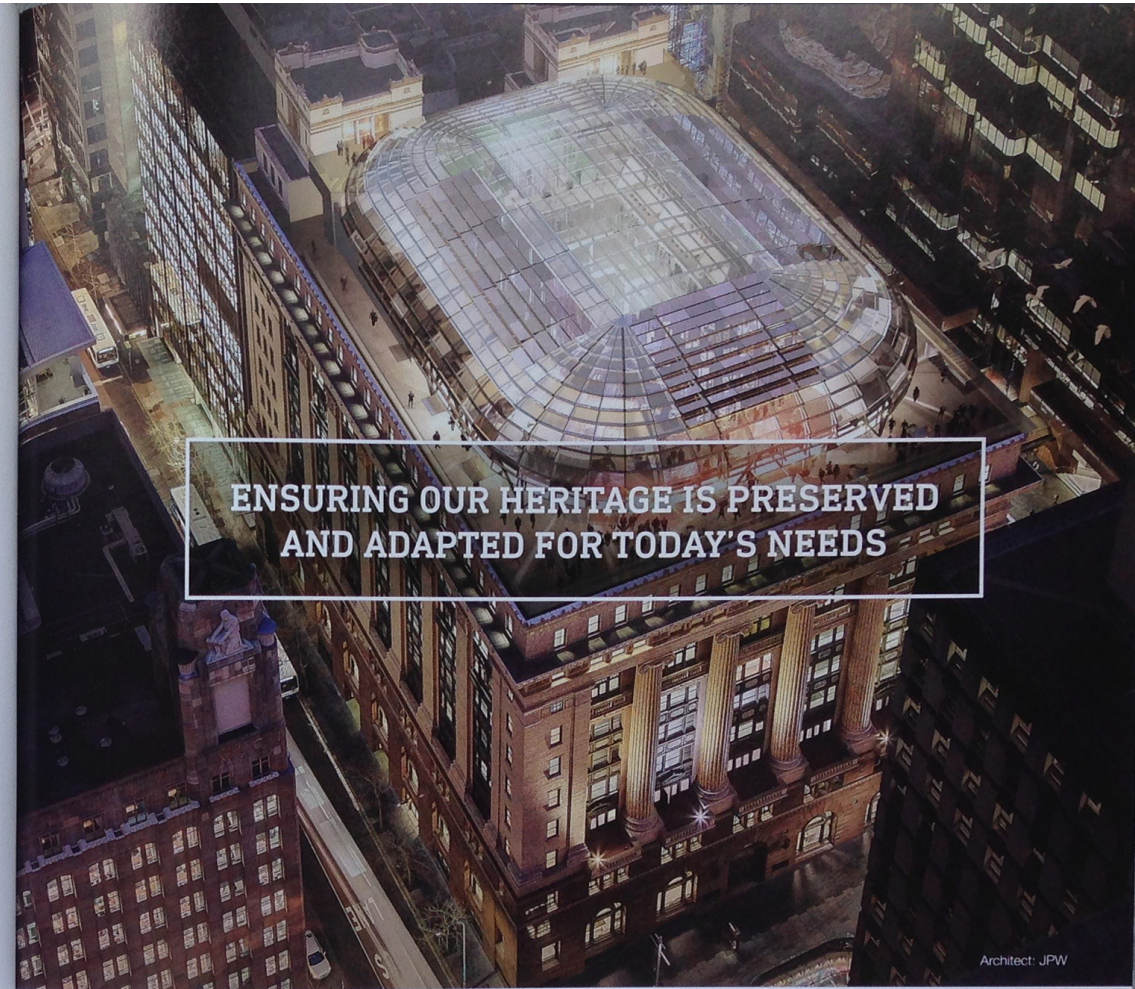
**Practice profile**  
Steffen Welsch Architects specializes in an "active sustainability." The practice's designs aim at reduction and the cost-efficient and economic use of resources. It celebrates light and balance, and design for comfort, affordability and longevity.

**Project team**  
Steffen Welsch, Luke Perry,  
Doril Przyborowski

**Builder**  
Lee Gordon Builder

**Consultants**  
**Engineer:** John Brock  
**Landscape:** Kate Seddon  
Landscape Design  
**Sustainability:** LID  
Consulting

**Photographer**  
Shannon McGrath



**ENSURING OUR HERITAGE IS PRESERVED  
AND ADAPTED FOR TODAY'S NEEDS**

Architect: JPW

## HERITAGE COUNCILS VIC & NSW

50 Martin Place is an award-winning heritage conservation and sustainability project that combines forward thinking commercial property design. The site, a landmark of Sydney's CBD, was chosen by Macquarie Group as a commitment to the area's historic financial district.

The building's external aesthetic and internal features contrast elegantly. From the street, the heritage qualities remain almost unchanged, except for the glimpse of the magnificent new glass dome that crowns the heritage building.

[environment.nsw.gov.au/heritage](http://environment.nsw.gov.au/heritage)  
[heritagecouncil.vic.gov.au](http://heritagecouncil.vic.gov.au)

### Fast facts:

- 50 Martin Place is the largest heritage building to achieve the 6 Star Green Star rating.
- The refurbished building is Macquarie Group's new global headquarters.
- The new glass dome roof and expanded atrium provide 55% more daylight compared with the previous structure.

Proud supporter of the 2015 Houses Awards House in a Heritage Context category